

**GEORGIA
ENSEMBLE** THEATRE

Mainstage

**ALABAMA
STORY**

by **Kenneth Jones**

directed by
Thomas W. Jones II

September 8-25, 2022

#GETAlabamaStory

Anita Allen-Farley
Co-founder
Producing Artistic
Director

GEORGIA
ENSEMBLE THEATRE
Mainstage

James Donadio
Artistic
Director

PRESENTS



directed by **Thomas W Jones II**

Setting:

Montgomery, Alabama. 1959, February to December

There will be a 15-minute intermission

Advisory: The performance employs battery-powered non-tobacco cigars and cigarettes

Alabama Story is presented through special arrangement with
Dramatists Play Service.

Videotaping, photography, or other recording of this
production is strictly prohibited by copyright law.

Alabama Story was originally produced by Pioneer Theatre
Company in Salt Lake City, Utah, in January 2015; Karen
Azenberg, Artistic Director; Chris Lino, Managing Director.
Alabama Story was first developed in association with the
Southern Writers' Project, a program of Alabama Shakespeare
Festival; Geoffrey Sherman, Producing Artistic Director.
Alabama Story had additional development by TACT/The
Actors Company Theatre, New York, NY.

*Georgia Ensemble Theatre's mission is
to create connection between artists and audiences of all ages.*

CAST

Shannon Eubanks* Emily Wheelock Reed
Don Farrell* Senator E. W. Higgins
Jontavious Johnson Joshua Moore
Emily Nedvidek Lily Whitfield
Justin Walker Thomas Franklin
Robert Wayne Garth Williams (and others)

*Members of Actor's Equity Association

*The Actors' Equity Association is the Union of Professional
Actors and Stage Managers in the United States.



ARTISTIC STAFF

Director Thomas W. Jones II
Stage Manager Gabby Peralta
Assistant Stage Manager Katelyn Zeller
Scenic Designers Isabel & Moriah Curley-Clay
Scenic Charge Stefnie Cerny
Costume Designer Rachael Ottinger Karas
Costume Assistant Caitlin Eldred
Wig & Hair Designer George Deavours
Lighting Designer Toni Sterling
Production Electrician Tom Priester
Sound Designer Jeremiah Davison
Sound Engineer Bailey Gafeney
Production Manager Gabby Peralta
Technical Director Monty Wilson
Assistant Technical Director Parker Ossmann
Covid-19 Safety Officer Katelyn Zeller

GEORGIA ENSEMBLE THEATRE STAFF

Producing Artistic Director	Anita Farley
Artistic Director	James Donadio
Interim Production Manager	Gabby Peralta
Interim Technical Director	Monty Wilson
Education Director	Laurel Crowe
Education Manager	Gabrielle Hines
Communications Director	Mary Saville
Box Office Manager	Nick Lynn-Rulon
Box Office Assistant	Savannah Rootes
Box Office Associate	Meggan Collins
Development Manager	Jonathan Johnson
Business Manager	Nick Lynn-Rulon
Casting Associate	Candy McLellan
House Management	Meggan Collins

Read GET Staff bios on our website at get.org.

Georgia Ensemble Theatre Board of Trustees

Jeff Fischer (President)	Anita Farley
Katie Parvis (Secretary)	Amy Gates-Stroud
Larry Holbrook (Treasurer)	Gisele Holloway
Bob Hagan (President Emeritus)	Barbara Lovett
Justin Anderson	Heather McKinley
Hans Appen	Robin Ives Moncrief
Carla Crowell	Lisa Tilt



Shannon Eubanks *she/her* (Emily Wheelock Reed) first worked with Anita and Bob Farley in 1979 when she played Katherina in *The Taming of the Shrew* at the Alaska Repertory Theatre. Jump forward to 1991, when Bob thought he hallucinated her in the Kroger near his house, and subsequently cast her in GET's very first production, *You Can't Take it With You*. Twenty productions later (acting - *The Lion in Winter*, *The Man Who Came to Dinner* - and directing - *Of Mice and Men*, *Morningside*, *Night Must Fall*), it's still a lovely collaboration. Atlanta is a magical place that has let her act at the Kennedy Center, with the Opera, with the Symphony, and with the city's finest theaters. 200 stage roles and counting, you can stream her on TV this summer in *THE SUMMER I TURNED PRETTY*, *FIRST WIVES' CLUB*, and *CREEPSHOW*.



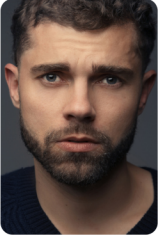
Don Farrell *he/him* (Senator E.W. Higgins) For GET: *Forever Plaid*; *The Taffetas*; *A Taffeta Christmas*; *A Grand Night for Singing*; *My Way: A Musical Tribute to Frank Sinatra*; *Sisters of Swing: The Story of the Andrews Sisters*; *Beyond the Rainbow*; *Tintypes*; *Forbidden Broadway*; *My Fair Lady*. AEA actor since 1992. Co-founder/Artistic Director of Actors Theatre of Indiana (www.atistage.org). He dedicates this performance to his mother, Libby Farrell and his mentors Bob and Anita Farley. Find him at thisisdonfarrell.wixsite.com/don-farrell



Jontavious Johnson *he/him* (Joshua Moore) is beyond excited for his first performance with Georgia Ensemble Theatre. Some of his favorite theatre credits include: Rover in *The Incredible Book Eating Boy* (Alliance Theatre), Buddy Bolden in *Jelly's Last Jam* (National Black Theatre Festival 2019) and Ace in *Hoodoo Love* (Spelman College) Jontavious is an Atlanta native, starting with the Youth Ensemble of Atlanta and later receiving his Bachelor's of Arts from Morehouse College where he studied Theatre and Performance. TV and Film credits include: *MODERN LOVE* (Amazon Prime) *OUTER BANKS* (Netflix) and *NATIONAL CHAMPION\$* (2021). He thanks his friends and family for their continuous support! To God be the glory!



Emily Nedvidek *she/her* (Lily Whitlock) is an Atlanta based actor, real estate agent, and hot dog connoisseur with a Masters in Classical Acting from LAMDA. Select Atlanta credits include *Bullets Over Broadway* (GET), *MAC|BETH* (Synchronicity), *Christmas with the Crawfords* (Out Front), *The Wizard of Oz* (Atlanta Lyric), and *Christmas Dearest* (upcoming). Special thanks to her family, Mark, and the cast and crew for being patient with her many injuries. @enedvidek



Justin Walker *he/him* (Thomas Franklin) is excited to work with Georgia Ensemble Theatre. Credits include: the Alliance Theatre, TheatreSquared, Hangar Theatre, Arkansas Rep, Warehouse Theatre, Synchronicity Theatre, The Atlanta Opera, Georgia Shakespeare, Aurora Theatre, Horizon Theatre, Centre Stage, and Atlanta Shakespeare, among others. Justin holds an MFA in Acting from the University of Arkansas and is proudly represented by Stewart Talent.



Robert Wayne *he/him* (Garth Williams) has performed with many Atlanta's theatres, including Atlanta Lyric Theatre, Theatrical Outfit, Shakespeare Tavern, Theatre of the Stars, Essential Theatre, and Theatre in the Square. Favorite shows include GET's *The Elephant Man*, the Actor's Express production of *Spring Awakening*, and Serenbe's *Cabaret* (2018 Suzi best supporting actor). SAG/AFTRA, represented by Privilege Talent. Film/TV includes: *A Jazzman's Blues*, *One Night in Miami*, *Charlie's Christmas Wish*, "Heels," "Creepshow," and "The Have and Have Nots."



Thomas W. Jones II *he/him* (Director) was born and raised in Queens, New York. He returns to GET after directing *Ain't Misbehavin'*. He is an acclaimed, award-winning director, writer, and performer of more than 200 plays worldwide. His work has received 48 Washington DC Helen Hayes Award nominations, winning 15 awards, including Best Director for Samm Art Williams' *Home* and his own *Bessie's Blues*. He has also received 3 New York AUDELCO Award nominations, the Drama-Logue Award, the San Diego Critics Award, NAACP Phoenix Award, among others. In 1978, Tom founded Jomandi Productions, where, as Co-Artistic Director and Producing Director, Tom led Jomandi to become the third largest African-American theater company in the United States. In 2000, Tom and his co-founders left Jomandi to create the entertainment company VIA International Artists, Inc. and subsequently a musical theater company VIA Theatrical. He is Artistic Associate at Washington DC's MetroStage where many of his original musicals have premiered and has directed 14 productions at Atlanta's Horizon Theatre. His most recent works include Athol Fugard's *The Painted Rocks at Revolver Creek* (MetroStage), Trey Anthony's *How Black Mothers Say I Love You* and *'da Kink In My Hair*, *Blackberry Daze* (Horizon Theatre), *Fool In Love: The Frankie Lymon Story*, *Three Sistahs*, *Gee's Bend*, *Point of Revue*, *Two Queens One Castle*, *Bricktop*, *Heart 'n' Soul*, *Love Johnny*, *A Cool Drink A Water*, and *Holler and Sheddin'*. Tom's musical *Cool Papa's Party* completed a workshop in New York with Wayne Brady. He has taken the production of Janet Langhart Cohen's *Anne and Emmett* (MetroStage) to the Oprah Winfrey Theater at the National Museum of African American History and Culture (Washington, DC), National Black Theatre Festival (Winston-Salem, NC) and on tour to the Netherlands.



Gabby Peralta (Stage Manager) is excited for her first show with Georgia Ensemble! She is a BFA graduate of the University of North Georgia and the Gainesville Theatre Alliance. She spent the last year as an apprentice with Theatrical Outfit working on *Baskerville*, *Bright Half Life*, and *Lady Day*. She has enjoyed the opportunity to step into a new role as production manager and would like to thank her friends and family for their constant support. Enjoy the show!



Katelyn Zeller (Assistant Stage Manager) is thrilled for her first time working with the Georgia Ensemble Theatre company. She is a recent graduate from Gainesville Theatre Alliance with a Bachelor's of Art in Theatre. Katelyn enjoys being a versatile theatre artist, expressing herself through stage managing, directing, and acting. She wants to thank her friends and family for their constant support.

Moriah and Isabel Curley-Clay (Set Designers) Past GET productions include *Vanity Fair*, *Once on This Island* and *Peter and The Starcatcher*. Other recent designs include: *Hands Up*, *7 Testaments*- Alliance Theatre, *Reparations* (AUDELCO Award Best Scenic Design, 2019-2020) Billie Holiday theatre, *America in One Room*, *My Lord What a Night*, and *Buddy: the Buddy Holly Story* - Florida Studio Theatre, *Downstairs*, *Hometown Boy* -Actor's Express, *Feeding Beatrice*, Aurora Theatre, *Every Brilliant Thing*, Horizon Theatre. They are the recipients of multiple Suzi Bass Awards for designs in Atlanta. Isabel and Moriah teach scenography at Spelman College. Members United Scenic Artists 829. www.axisstudiosdesign.com

George Deavours (Wig/Hair Designer) is delighted to working with GET. As a professional hair and wig designer, he has created hair designs for more than 300 shows such as *Xanadu*; *Dreamgirls*; *The Producers*; *42nd Street*; *The Mikado*; *la Cage aux Folles*; *White Christmas*, and *Gypsy* to name a few. By day, George has a studio at French Door Salon in Duluth, Ga. Member of IATSE Local 798

Special Event - One Night Only

All the Way

A FRANK SINATRA TRIBUTE



Tuesday, Sept. 20, 7:30

Don Farrell ("Senator Higgins") brings his jazzy one-man show to the GET stage for a celebration of Ol' Blue Eyes himself. You'll hear all of Sinatra's hits, plus stories from his life, delivered in Don's engaging style. Tickets start at \$35.



ROSWELL

1144 Alpharetta St.
Roswell, GA 30075

BROOKHAVEN

305 Brookhaven Ave 1250
Atlanta, GA 30319

EMORY VILLAGE

1569 N. Decatur Rd. NE
Atlanta, GA 30307

MARIETTA SQUARE MARKET

68 North Marietta Pkwy N.W
Marietta, GA 30060

Opening Night Sponsor



Media Sponsor

**Special Thanks to Alliance Theatre, Horizon
Theatre, & Atlanta Lyric Theatre**

Theatre Classes for All Ages at

GEORGIA THEATRE
ENSEMBLE
Studio

Fall C lass Registration NOW OPEN
get.org/classes

Classes for all ages & skill levels with professional theatre/film artists in a supportive, fun environment, year-round.

· Elementary Actor Lab · Musical Theatre · Film & TV Acting · Improv · Classical & Contemporary Acting · Performance Ensembles · Physical Theatre · Stage Combat · Private Lessons ·

Lane Cake

For the cake:

1 cup (2 sticks) unsalted butter at room temperature, plus more for pans
2 cups sugar
1 teaspoon pure vanilla extract
3¾ cups sifted cake flour (not self-rising), plus more for pans
3½ teaspoons baking powder
¾ teaspoon kosher salt
1 cup milk
8 large egg whites

For the filling:

2 cups raisins, preferably large, such as muscat or monukka, finely chopped
½ cup bourbon
2 ¾ cups shredded unsweetened coconut
1¼ cups chopped pecans
½ cup candied kumquats, drained and chopped



For the glaze:

8 large egg yolks
4 whole large eggs
1½ cups sugar
2½ cups (5 sticks) unsalted butter, cut into pieces, at room temperature (For ease of handling, cut into pieces while butter is cold, then allow pieces to come to room temperature.)
¼ cup bourbon

Preheat oven to 375°F. Butter and flour 4 round 9-inch cake pans; set aside.

In the bowl of an electric mixer fitted with the paddle attachment, cream butter, sugar and vanilla until light and fluffy. Whisk together flour, baking powder and salt. Alternating with the milk, add these whisked dry ingredients to butter mixture in 3 additions to make batter. Begin and end with the dry ingredients.

In a clean mixer bowl, using the whisk attachment, whisk 8 egg whites until stiff but not dry. Fold egg white mixture into cake batter. Divide batter evenly between prepared cake pans. Bake, rotating pans halfway through, until cake batter springs back when touched but has no color on top, about 15 minutes. Transfer pans from oven to a wire rack to cool for 15 minutes. Remove cakes from pans, and return to racks to cool completely.

In the heatproof bowl of an electric mixer set over a pan of simmering water, whisk together egg yolks, whole eggs and sugar until thick and glossy, and sugar has dissolved. Transfer bowl to mixer fitted with the whisk attachment and whisk until mixture is cool to the touch, about 10 minutes. Add butter, one piece at a time, whisking until thoroughly combined. Add bourbon and whisk until incorporated. If frosting starts to separate, continue beating until it comes back together, about 5 minutes.

Cover raisins with warm water and soak until plumped, around 15 minutes. Drain. Place one cake layer on a serving plate. Brush with about 2 tablespoons of bourbon to moisten. Spread with ¾ cup frosting and top evenly with ½ cup soaked raisins and ½ cup unsweetened coconut. Sprinkle with ⅓ of the chopped pecans and ⅓ of the chopped kumquats. Repeat process with 2 more cake layers in the same order ((frosting, raisins, coconut, pecans, kumquats). Top with remaining cake layer. Brush with remaining bourbon. Spread a thin coat of frosting over the top and sides of cake to cover. Chill for 20 minutes. After cake is chilled, use remaining frosting to fully cover top and sides of cake. Serve.

Recipe from: www.rouses.com/cooking/recipes/alabama-lane-cake



by Jeffrey Hatcher, based on the novella by Henry James
 October 27-November 14, 2022

SUBSCRIBE NOW

GEORGIA ENSEMBLE THEATRE 30th Anniversary
 Mainstage Season

Georgia Ensemble Theatre Season Sponsors Thank You!

Support for GET is generously provided by the City of Roswell.



Bloomberg Philanthropies **Arthur M. Blank Family Foundation**

Major funding for this organization is provided by the Fulton County Board of Commissioners. This program is supported in part by Georgia Council for the Arts through the appropriations of the Georgia General Assembly. Georgia Council for the Arts also receives support from its partner agency—the National Endowment for the Arts.

Professional Affiliations

